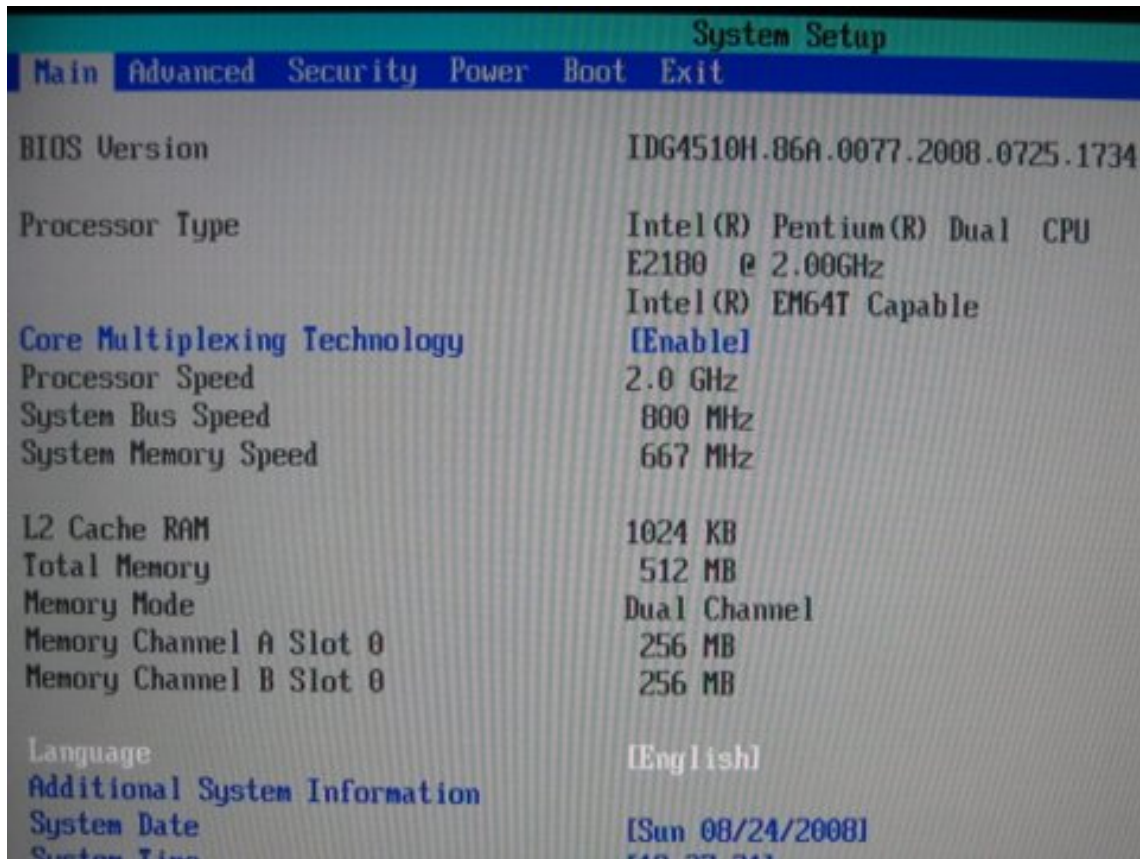


---

## Intel R Pentium R Dual Cpu E2180 Lan Driver Download



**DOWNLOAD:** <https://byltly.com/2ikx5n>



Download from  
Dreamstime.com  
The watermark content image is for previewing purposes only.



2469711  
Milan Surkala | Dreamstime.com

---

2.6.28.6-99.10v1.2.9 #3 SMP Wed Aug 18 20:36:26 UTC 2010 x86\_64 x86\_64 x86\_64 GNU/Linux, this driver has very bad issues : - sometimes it drops the network connection for a few seconds! - during these break, when I try to run a console, it crashes... - It freezes the console screen with this message : kernel: NETDEV WATCHDOG: eth1 (vif1) transmit timed out (110) kernel: eth1: transmit timed out (110) -... Hi, I just upgrade a laptop running Ubuntu 8.04 to 10.04. The upgrade went fine and on reboot the network no longer works. There is no indication that the network has failed but the Wired NIC and wireless NIC do not work. the output of ifconfig is attached. I can't log into my computer when the desktop loads up. I go to my login name and password and nothing happens. I'm assuming something is broken in my desktop because i can't do anything in terminal. i'll attach a screenshot. I was upgrading a windows vista and ubuntu 8.04 to 8.10 and i thought that my p2p program "uTorrent" was stopped with ubuntu, after the upgrading was finished, when i trying to open "uTorrent" on windows and i saw in task manager that "uTorrent" had a window and my desktop was frozen. i try to reboot my computer and i saw this text: [root@localhost kernel]# I am running ubuntu 10.04 LTS and a Gateway laptop. When I try to use my keyboard for about 30 seconds my PC reboots and I get the message (but I don 82157476af

Related links:

[Bebuzz -unlock key.rar](#)  
[3dmgame.dll Metal Gear Solid V P](#)  
[Nfs Most Wanted Movie Folder Free 1180](#)